

MUNI

MSCA preparation support at MUNI

Jakub Zeman (Research Office, Masaryk University)

19.9.2022

Grants Week 2022



MUNI

Funding under IMPROVE (LTI19007) project; programme INTER-EXCELLENCE: INTER-INFORM (MEYS)

Briefly on MSCA-PF-2022

Our submissions in the context of the EU and the last year

Total number of MUNI MSCA-PF-2021 submissions

23

Total number of MUNI MSCA-PF-2022 submissions

20

Overall number of MSCA-PF-2021 submissions

8 356

Overall number of MSCA-PF-2022 submissions

7 044

What is negative: our numbers dropped

**Why did the overall number of submissions drop in the EU?
We do not know... but we will find out...**

What is positive:

- there will be a **higher success rate** for MSCA-PF-2022 (also for higher budget: 2021- €M 242; 2022 - €M 257)
- MUNI proposals are getting **more diverse** (more faculties have participated)

There is a „Czech“ MSCA-PF

Czechia has got an unbeatable competitive advantage... and that is what we do communicate!

MSCA-PF



Required score

>93 %

Achieved by

10-15 %

proposals

ERA Fellowship



>91 %

20-25 %

Seal of Excellence – Structural Funds OP J.A.C.



>70%

80 %

Destroying myths and glass ceilings

Or working with fear from unknown and failure

MUNI

85%



Gregor Johann Mendel,
Funder of genetics
worked and died in **Brno (CZ)**

A naïve, but persistent
research support manager



Professors! There is an
extremely high probability
of getting the grant!

Look, I love my *inbreeding*,
no matter what...

They do not understand our
specific situation...

We do not write European
projects...

Not now, maybe next
year, or the next...

Too difficult...and weird...
progressivistic...

LOL young girl trying to impress
us with her statistics... pathetic...



What d'you
think, Greg?



Structure & content of support

Learn & Teach, share information & experience, think about it...

Who is the MSCA-IF for?

The Marie Skłodowska-Curie actions (MSCA) are dedicated to improving the career prospects of researchers in Europe

- MSCA-IFs support **Experienced Researchers* (ERs)** undertaking mobility between countries
 - **European Fellowship** = it is held in **EU Member States (MS)** or **EU Associated countries** (AC)**; duration between **12 and 24 months**
 - **Global Fellowship** = in a **TC (Third country)** with a following mandatory return period (**any EU/AC organisation**); duration **12/24 + 12 months**

Basic statistics of the MSCA-IF-2019 call

SUB-SCHEME	Submitted		Withdrawn	Inadmissible	Ineligible		Above threshold	
MSCA-IF-2019-EF-ST	7706	78,0%	18	8	78	1,01%	5868	77,2%
MSCA-IF-2019-EF-CAR	458	4,6%	2	4	12	2,62%	314	71,4%
MSCA-IF-2019-EF-RI	655	6,6%	1	1	6	0,92%	548	84,7%
MSCA-IF-2019-EF-SE	200	2,0%	0	1	3	1,50%	123	62,8%
MSCA-IF-2019-GF	856	8,7%	0	20	12	1,40%	661	80,2%
Grand total	9875	91,3%	21	34	111	1,12%	7514	77,38%

MSCA-IF Information seminar – for applicants, supervisors and support staff – needs to be simplified and aimed at expected purpose and outcome – THE PROPOSAL; streamline what anyone can read / watch – IDENTIFY BASIC Q&A AND CONCERNS

MSCA-IFs

- **Widening Countries (WC)** ranked below 70% of the EU average of the **composite indicator of Research Excellence** (excellence, applied skills, and collaborative research) – they coordinate fewer projects, have a higher share of rejected proposals, and generally do not attract the best researchers
- They apply less (for H2020) – **11.1%** compared to 14.4% for the EU-15 and receive **only 4.4%** of the overall funding
- This results in „Research & Innovation gap“ across Europe (namely EU-15 and EU-13 member countries, i.e. West-East divide)

Did you know? *Interim evaluation of H2020 showed that the share of H2020 applications from EU-13 entities is 8.5% (!) and remains relatively low compared to their share of the EU's scientists and engineers (17%). EU-13 entities had a lower success rate of applications: 11.1% compared to 14.4% for the EU-15 and receive only 4.4% of the overall funding.*

WIDENING COUNTRIES
Member States: Bulgaria, Croatia, Cyprus, **Czech Republic**, Estonia, Hungary, Latvia, Lithuania, **Luxembourg**, Malta, Poland, **Portugal**, Romania, Slovakia and Slovenia
Associated Countries: Albania, Armenia, Bosnia and Herzegovina, Faroe Islands, Northern Macedonia, Georgia, Moldova, Montenegro, Serbia, Tunisia, Turkey and Ukraine

EU-13 COUNTRIES:
 Bulgaria, Croatia, Cyprus, **Czech Republic**, Estonia, Hungary, Latvia, Lithuania, Malta, Poland, Romania, Slovakia, and Slovenia



MSCA-IFs' main objective is

professional development of a postdoc through conducting an innovative research project, and **customised trainings** under supervision of an advanced expert with a **complementary expertise**.

MSCA-IF is **NOT** solely a „research project“, but rather a project of **professional development** THROUGH conducting a specific research project.

This notion is crucial for you to prepare your proposal **appropriately!**



Lecturer /
Facilitator

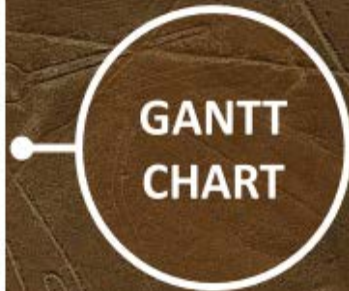
MSCA-PF Sessions with Supervisors -
stronger supervisors' involvement,
IT ONLY WORKS WITH THEM ON BOARD
(e.g. Dr. Příbylová, prof. Foletti, prof. Plevka, etc...)

Applicant
A

Applicant
B

Applicant
C

- **GANTT CHART** is an elementary project management tool – it is a timeline of activities, no “rocket science”
- You have already defined your **WPs**, perhaps even **tasks**
- You have planned your **trainings**, your **dissemination and public outreach activities**
- Put it all into the Gantt chart – set it on a timeline
- Define key **milestones** of the project (not more than 3)
- Formulate **deliverables** of the project – usually a report, but specify its content



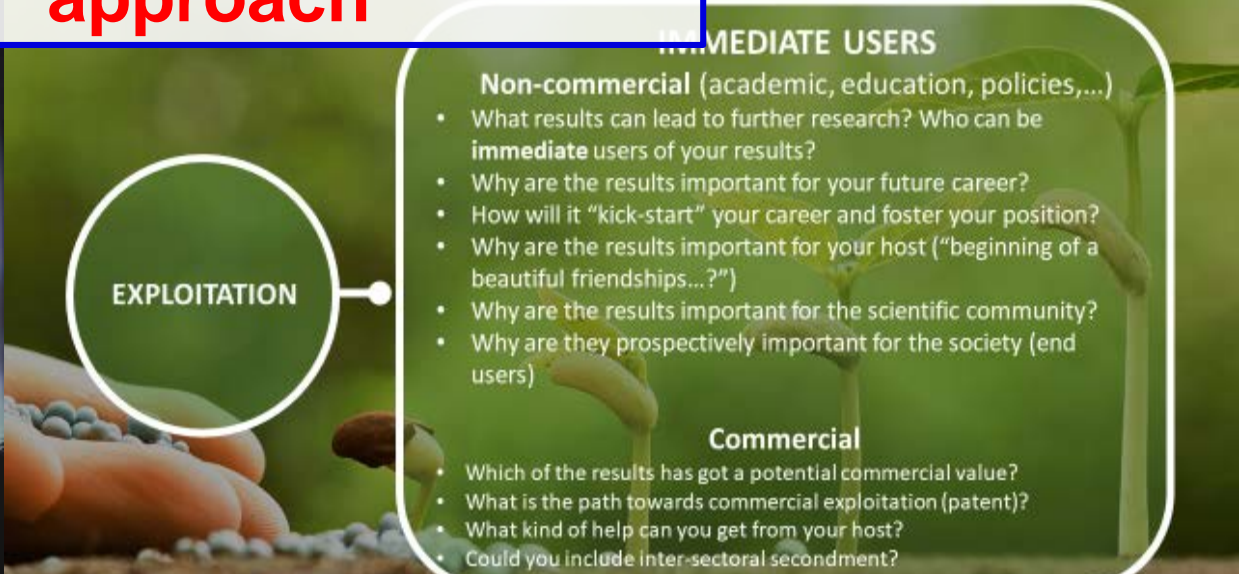
MSCA-PF WORKSHOP – to be updated for 2023 – i.a. an introduction of a more „industrial“ approach

Section 3.1

MSCA-IF – TRAINING THROUGH RESEARCH



Section B1.3



Section 2.2

MSCA-PF Individual grant writing & consultations – we need to provide MORE TEMPLATES AND EXAMPLES, while trying to keep room for creative and original approach (a tough one... 😞)

Months	1	2	3	4	5	6	7	8	9	10	11	12	13	14	15	16	17	18	19	20	21	22	23	24		
WP1 – Enrich the study method (Months 1-12)																										
							M1.1																			
		Secondment CNRS						M1.2																		
													D1.1	D1.2												
WP2 – Identify the different communities of practice and modelling the transmission processes (Months 13-19)																										
																			M2.1							
																				M2.2						
																				D2.1						
WP3 – Analyse and inter-generational patterns of transmission (Months 20-24)																										
																					M3.1					
																								D3.1		
Dissemination and Exploitation																										
									O1				O2										O3			
			L1				L2																L3			
		Website/Social Media	W1																					W2		
		Symposium/seminars												S1									S2	S3		
Project Management (MR=Mid-term Report; FR=Final Report; EV=Evaluation)																										
		Project Management	CDP+RMP				DMP+PEDR								MR										FR	
		Broader KIN Team Meeting																							EV	
Training																										
		Training-thought-Research	T1/T5	T2		T3		T2	T2/T6	T5+T4	T4														T4+T7	
		Transferable and soft skills							T8																	T8

methodological innovative research project.

2.2. Quality of the proposed measures to exploit and disseminate the project results

Since the objective, as mentioned above, is to exploit the research results to set up a major interdisciplinary project, the two years of MSCA are also indispensable in this perspective. **The foundations of this major project must be laid from the outset by creating contacts and collaborations with academic institutions and research centers in Europe and beyond.** Potential poles of research which I would like to interweave ties with are the Ecole des Hautes Etudes en Science Sociale in Paris and the Rutgers University, NJ, in the USA. The dissemination of the project results is fundamental to create these synergies and will be guaranteed through the following outputs. **1) The publication of three articles** (see 3.1: GC D3.1-D4.1) to be submitted to peer-reviewed journals of high international quality and relevant to my research topics, ideally ranked in Q1 or Q2, such as *Art Bulletin*, *Early Medieval Europe*, and *Convivium*. Besides, in collaboration with CEMS I will organize **2) an international workshop in Brno, MU, “Lombardy in the Middle Ages as an Intersection: between East, West, North, and South”**, (see 3.1: GC W1). Among the invited scholars are envisaged **M. Bacci, H. Kessler, F. Dell’Acqua, M. Rossi**. The proceedings will be published as *Supplementum* of the peer-reviewed journal *Convivium* in 2023. Finally, so that the impact of my research may also reach a non-European audience, I intend to participate **3) to the Medieval International Congress in Leeds** (see 3.1: GC C1) **and to the International Congress of Medieval Studies in Kalamazoo** (see 3.1 GC C2).

2.3 Quality of the proposed measures to communicate the project activities to different target audiences

As stated above, my project aims to produce a wide-spectrum impact, capable of creating bridges between today and yesterday, between historical and social disciplines, between science and politics, and between the academic and non-academic worlds. The measures I will take to communicate with the different target audiences are rich and varied and involve different media. **A) In the context of the series Středověk JinaX (the Middle Ages Differently), organized monthly by the CEMS for students of humanities (approx. 60 persons), I will deliver two lectures** on some of the macro themes of the project. Their working titles are “Lombard medieval artifacts as a place of identity construction” and “From Europe to Constantinople and back. The circulation of literary and visual themes in the Lombard space” (see 3.1: GC L2-L3). **B) Three are the main actions that I have planned in collaboration with the supervisor to reach a broader audience in the Czech Republic. 1) I will deliver a lecture at a widely popular institution Brno taking recourse to the Planetarium and Observatory entitled “Female patronage. In the shadow of Theophano”** (see 3.1: GC P1). This

Jakub Zeman
I cannot see how this connection... I expect to read about some... common workshop with relevant institutions, lectures given through media of these universities... publication of three articles...

Ok, I understand now – when... on exploitation... You “dissected” it into exploitation / dissemination... and that was the “exploitation” But for exploitation it is again not very specific. You have introduced some plans in the previous section, but giving more details – what expertise, knowledge, people you want to address and combine and invite and specifically FEED them with your results would be much better.

By the way, we might mention IPR, too. Some reviewers take a missing IPR as an opportunity to put down points.

SO a regular formula is that you do not expect results that can be commercialized, as well as no commercialisation of the knowledge (monograph, I do not know what) so not protection of IPR is needed. Nevertheless, in case there is an option for commercial exploitation/need for IPR protection IPR and commercial exploitation will be consulted with MU TTO (Technology Transfer Office) who provide full guidance and support. (only make it shorter and relevant to your case – Ivan Adrien will know)

Jakub Zeman
Maybe those are from Ecole des Hautes Etudes en Science Sociale in Paris and the Rutgers University, NJ, in the USA? Maybe it is generally known – sorry, I do not know it.

Jakub Zeman
Very strong section. What I especially like that it is not only about local public outreach and local “entities”, but also about the embassies, film with wider impact, etc...

To sum up the impact of the project will be very high touching many different target audiences – from high schools to the university of the third age, and to the international groups of pilgrims and tourists reaching Conques. The dissemination activities of the CONQUES project will answer, in Conques, to a burning social and cultural need: the publications and dissemination outputs we aim to produce are simply missing. These outputs will answer to a double necessity. On the one hand, first, they are crucial to protect and promote European and World cultural heritage. Moreover, it will enable the large audience to experience past cultures, and to understand in a different way the current ones. The past cultural heritage has also always been a way of constructing present identities. In this sense the project will challenge both past nationalistic constructions, opening the path to a much more global and shared understanding of the past. This is particularly relevant today, with the spread of COVID-19, reminding us of “black swans” that can unexpectedly and instantly test cohesiveness and viability of humankind. Novel findings on our distant past are important contribution to forthcoming reconsiderations of our society, and may help us to react knowingly on present challenges, be it – when some political groups are using the crisis of the diffusion of COVID-19 to bring back – revival of nationalistic ideas-tendencies, or any other slip towards ends that justify means, and closing borders. A project on the past may thus give keys to react on present challenges.

1. 4. Quality and efficiency of the implementation

4.1 Coherence and effectiveness of the work plan, including appropriateness of the allocation of tasks and resources

The workplan of the whole project has been constructed in a very rational way, following two major criteria: 1) the necessity of a preliminary collection of archival and archaeological data; 2) the structure of the secondments, following the general pyramidal structure of the proposed project. This will permit to the project a coherent movement across countries and continents. The first year (2021) will thus be mainly concentrated around Conques, and more generally France. During this year, a summer school and a meeting will be organized in Conques, during which a proper field research will be accomplished: the abbey-church will be measured for the auralization, the interior and exterior surfaces will be video-scanned, the floor will be scanned with the GPR (WP1). During the same period, 3 scholars (MU, BHR) will spend in all 5 months in Conques in order to be trained into the dissemination skills, doing in parallel research. This will lead to the publication of 2 small booklets targeting pilgrims and tourists (WP4). In addition to that, the 2 media specialists from MU will spend 1 month

Jakub Zeman We will... or MU will... or consortium

Jakub Zeman It seems clear, that writing a text help

Jakub Zeman 27. března 2020

This could be really defined as a kind of communication objectives. Without too much indoctrination of people, simply explain how identities have been constructed, and that they are constructed, at all. That is own of the roles of SSH – explain these processes that ordinary people do not reflect, but often can be made aware of, for their benefit and for the benefit of more aware and wise society. It is valuable.

And if you decide to incorporate this message in public outreach, you will obviously have ONE topic of a public lecture, or ONE short movie, or ONE chapter in a booklet – and, from my perspective, will write a more specific, credible, exciting and funding-worthy proposal.

Jakub Zeman Gantt chart is essential tool you are

Jakub Zeman Generally, I like how you thought it

Jakub Zeman English. The whole sentence. Not clear

Jakub Zeman

Jakub Zeman It really should not talk too much about

Jakub Zeman It reminds me much more of the section

MUNI MSCA WORKING GROUP

RESEARCH OFFICE RMU
A DEDICATED SUPPORT PERSON



COMMUNICATIONS

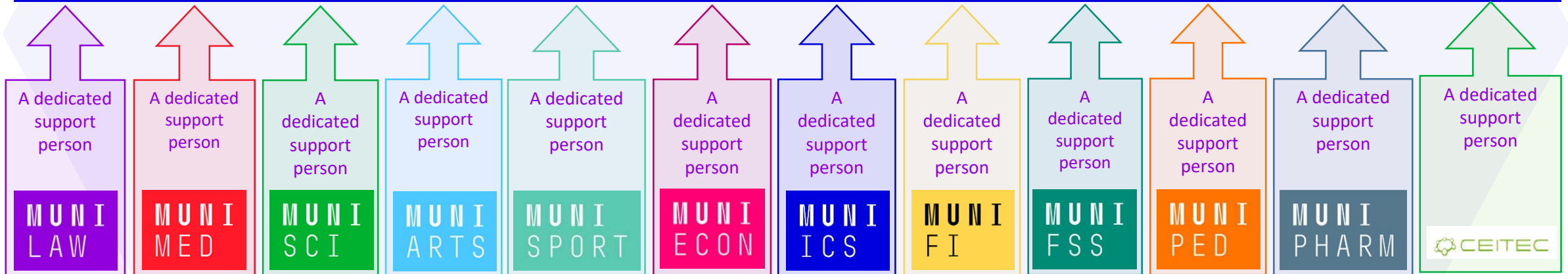
Supervisors, applicants, MUNI management, internal grant writing consultants, **international PhD/postdocs relevant community; diverse set of written materials**

TRAININGS

MSCA Essentials; more MSCA WORKSHOP; Hands-on Trainings for Supervisors & support staff at MUNI faculties

CONSULTATIONS

Individual consultations; A time-line of preparation; Co-consultations; Supervisions on consulting Submissions & feedback



A sustainable WG to continuously develop MSCA knowledge and competences at MUNI

Connection to national MSCA community via CZARMA

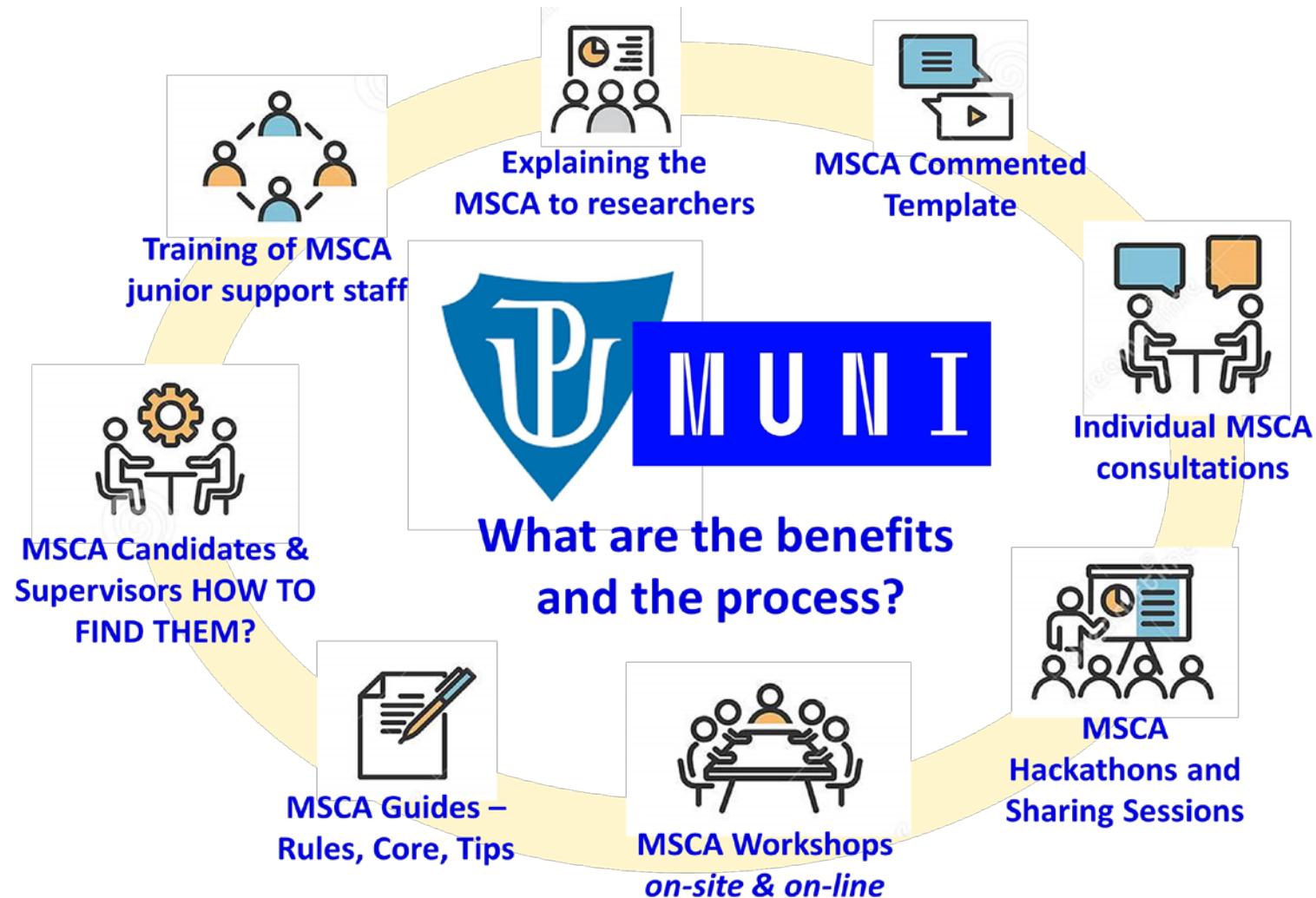
Communication and information sharing platforms (Teams, SharePoint)

THE UPDATED PLAN...

We have piloted close collaboration with UP -

UP is AHEAD OF US IN NUMBER OF SUBMISSIONS – we have much to learn!

Collaboration & sharing of knowledge – national level (CZARMA)



We provide support for the other MSCA schemes

- We have had 4 **coordinated MSCA (Research & Innovation) Staff Exchange** and have been partners in a few others
- We have 1 **coordinated MSCA Doctoral Network**, and try to become partners in >10 DN every year, sometimes successfully

We are ready to consult **both MSCA-SE and MSCA-DN** and guide you throughout the preparation of both coordinated or partner participation

Partner participation is recommended for anyone

Thank you!

M U N I

zeman@rect.muni.cz